



"Excellent handling and modelling,
great mimetic effect!"

Dr. Ariane Douvier, France

xcellent aesthetics made easy

The new ceram.x® is a universal composite for all cavity classes in the anterior and posterior region. Its distinct chameleon effect allows for a precise and reliable shade match resulting in highly aesthetic restorations with one single translucency.

Anterior restoration



Before



After restorations with ceram.x A3 from 32 to 43.

Ian Cline, UK

Posterior restoration



Tooth 36 with an occlusal caries lesion.



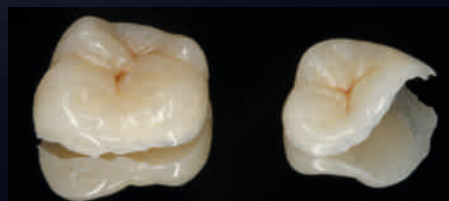
Restoration with ceram.x A2 giving the tooth back its lost anatomy and natural aesthetic appearance.

José Bahillo, Spain

Indirect restoration



SDR® placement and preparation.



Indirect restoration with ceram.x A2.



Indirect restoration on 26 and 27 after cementation and polishing.

Manuel Pinon, Spain

For clinical situations, where two translucencies are required, Ceram-X duo+ is recommended.



Compules Tips Intro Kit

Packaging Information

ceram.x® universal Compules® Tips Intro Kit 607.01.570
24 Compules Tips of 0.25g
(4 x A1; 4 x A2; 8 x A3; 4 x A3.5; 4 x A4)
1 Compules Tips Gun

ceram.x universal Syringe Intro Kit 607.01.550
5 Syringes of 3g (A1; A2; A3; A3.5; A4), Accessories

ceram.x universal Refills	Compules Tips (16)	Syringe
A1 (= VITA ¹ shades A1; B1; C1)	607.01.571	607.01.551
A2 (= VITA shades A2; B2; D2)	607.01.572	607.01.552
A3 (= VITA shades A3; C2; D3; D4)	607.01.573	607.01.553
A3.5 (= VITA shades A3.5; B3; B4; C3)	607.01.575	607.01.555
A4 (= VITA shades A4; C4)	607.01.574	607.01.554
BW (Bleach White)	607.01.576	

ceram.x universal Eco Refills	Compules Tips (52)
A2 (= VITA A2; B2; D2)	607.01.582
A3 (= VITA A3; C2; D3; D4)	607.01.583



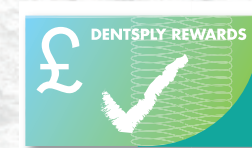
Syringe Intro Kit



Syringe Refill



Compules Tips Refill



To order visit
dentsplyrewards.co.uk

DENTSPLY

Small things. Big difference

THE MAKERS OF
PROTAPER® | CAVITRON® | WAVEONE® | SDR® | CERAM-X® | NUPRO®

DENTSPLY Limited
Building 3, The Heights,
Brooklands Weybridge,
Surrey KT13 0NY,
United Kingdom
Phone +44 (0) 1932 853422
www.dentsply.co.uk

xcellent adaptation and sculptability



based on
SphereTEC™
www.dentsply-spheredec.com

ceram.x®

universal nano-ceramic restorative



The unique SphereTEC™ technology takes handling comfort to the next level.

- Fast and easy polishing for outstanding gloss
- Natural aesthetics
- Ingenious simple shading system: 5 shades to cover the full VITA¹ range

DENTSPLY

Small things. Big difference

THE MAKERS OF
PROTAPER® | CAVITRON® | WAVEONE® | SDR® | CERAM-X® | NUPRO®



ceram.x[®]
universal nano-ceramic restorative



“Perfect shade match and optimum sculptability at the same time!”

Dr. Wilhelm Bestler, Germany

.xceptional handling

A new filler technology containing granulated spherical fillers in combination with an optimised resin matrix system results in preferred handling properties:

- adapts easily to cavity surfaces
- does not stick to hand instruments
- easy to sculpt
- slump resistant

.xplore the novel filler technology

SphereTEC™

ceram.x universal is based on the advanced granulated filler technology SphereTEC which is patent applied. SphereTEC stands for the process of manufacturing microsized, well-defined spherical superstructures, comprising of submicron glass. The SphereTEC fillers' morphology, particle size distribution and surface microstructure are key for the enhanced handling comfort and aesthetic outcome.



Microstructured surface of a SphereTEC filler (d3.50 ~ 15µm), obtained via spray-granulation process from submicron glass fillers.

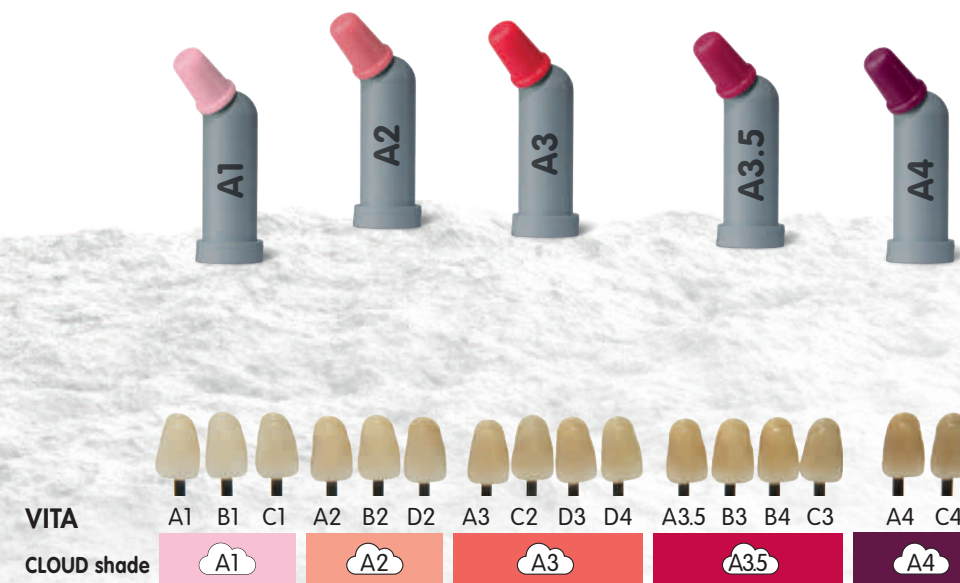
SEM picture showing SphereTEC spherical prepolymerised fillers providing a ball-bearing effect that enables excellent adaptation and sculptability.

The micro-granulated structure of SphereTEC is able to bind more free resin compared to usual fillers. Therefore ceram.x does not stick to hand instruments.

.xtremely simple CLOUD shade concept

The new CLOUD shade concept is designed to achieve shade match with the full range of VITA¹ shades with a minimised number of universal shades. ceram.x containing five CLOUD shades of moderate translucency named A1 to A4.²

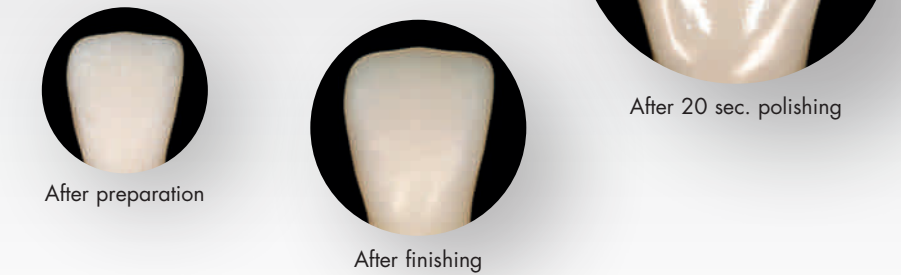
- 5 CLOUD shades cover the full VITA range
- Reliable shade match thanks to a distinct chameleon effect
- Smart iShade label for a quick translation into VITA



ceram.x – the universal nano-ceramic composite for all cavity classes.

.xperience the fast and easy polishing

ceram.x provides a fast and easy polishing procedure with both silicon based polishers and abrasive discs, resulting in an outstanding gloss.²

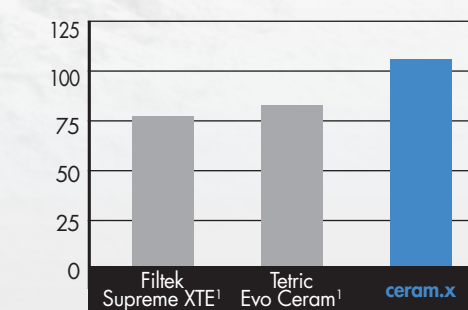


.xtra strong for long lasting restorations

ceram.x is the ideal universal composite for durable stress bearing posterior restorations.

Flexural strength² [MPa]

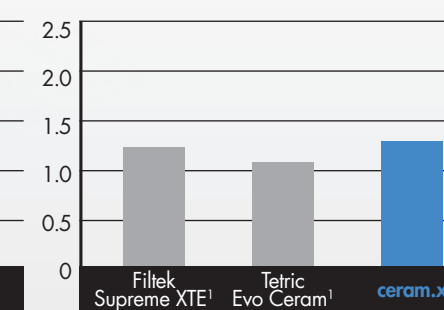
4-point bending after 2 weeks water storage



Lohbauer U and Belli R, 2015

High flexural strength is considered as important by international standards for the use as permanent posterior occlusal stress bearing restorations.

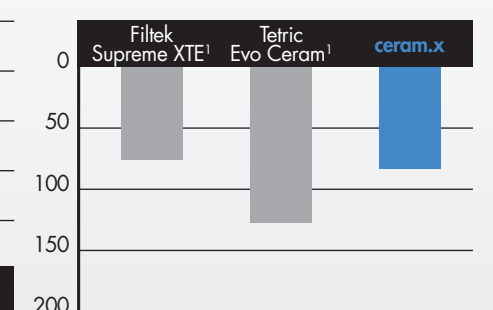
Fracture toughness² [MPa m^{0.5}]



Lohbauer U and Belli R, 2015

High fracture toughness is needed to resist propagation of cracks in the material and improves longevity of a restoration.

Localised wear – maximum depth² [µm]



Latta MA, 2015

Low loss of material is beneficial in occlusal contact areas under chewing forces for a stable occlusion.

¹ VITA[®] is not a registered trademark of DENTSPLY International Inc.

² Additionally ceram.x comprises one bleach white shade for the restoration of bleached teeth.

¹ Not a registered trademark of DENTSPLY International Inc.

² Data on file; available upon request, see contact details.