

Temporization Solutions

Protemp™

Temporization Material

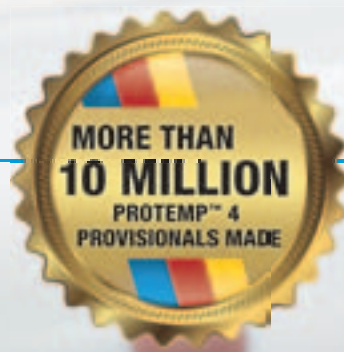


For each indication the
ideal temporization solution

3M ESPE

Protemp™ 4

Temporization Material



THE HIGH-PERFORMANCE MATERIAL
FOR ALL **IMPRESSION-BASED
PROVISIONALS**

- **Ultimate toughness**
for short- and long-term temporaries
- **Outstanding esthetics and gloss**
without polishing or glazing –
simply by wiping with alcohol
- Available in **6 shades**

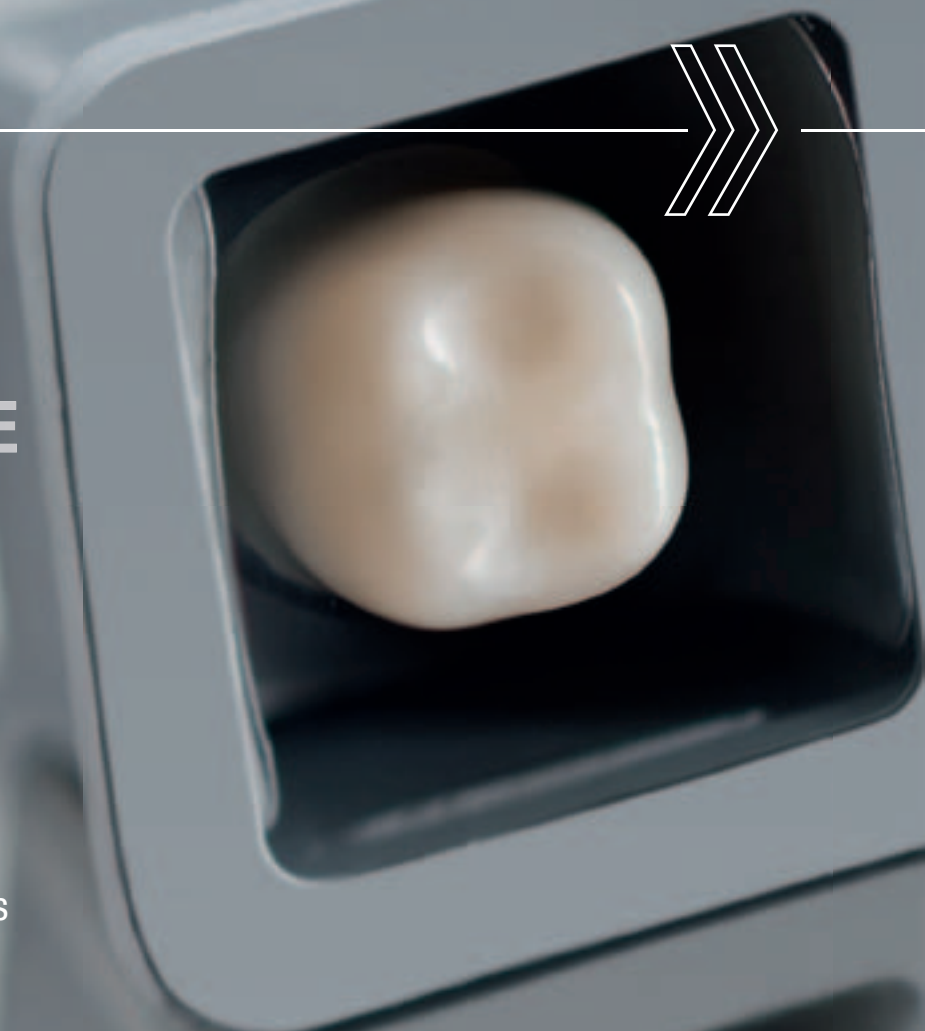
Protemp™ Crown

Temporization Material



THE PREFORMED CROWN WHEN
**TOOTH STRUCTURE
IS MISSING**

- **No impression** needed
- **Malleable** and light-curable
- **9 sizes in one universal shade**
for molars, premolars and canines

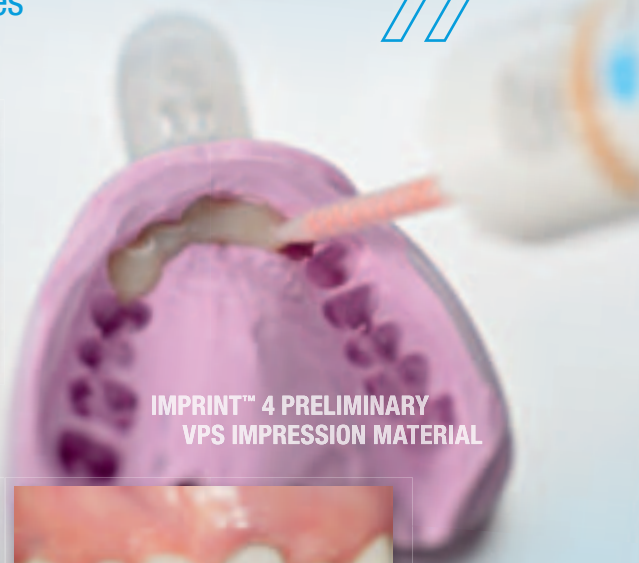


The proven solution ...

For temporaries on single teeth to long-spanning bridges



Highly esthetic provisional made with Protemp™ 4 Material replaces dysfunctional PFM crown.
Clinical case by Dr. Rakesh Jivan, Royal Lemington Spa, Warwickshire, UK



IMPRINT™ 4 PRELIMINARY VPS IMPRESSION MATERIAL



The outstanding toughness of Protemp™ 4 Material enables the fabrication of durable long-spanning bridges.
Clinical case by Dr. Mario Imburgia, Palermo, Italy

The clever solution ...

Especially suited for fractured teeth, lost restorations and implant abutments



The preformed anatomy of Protemp™ Crown Material greatly facilitates the reconstruction of fractured teeth.
Clinical case by Dr. Christopher D. Ramsey, Jupiter, U.S.A.



Protemp™ Crown Temporization Material skips the impression step and makes the temporization over implant abutments much easier.
Clinical case by Dr. Robert Margeas, Des Moines, U.S.A.

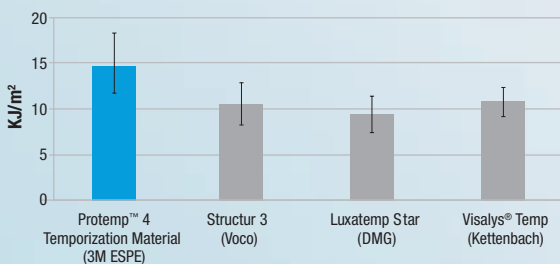
... through unrivalled technology

Tried and tested millions of times



Ultimate toughness.

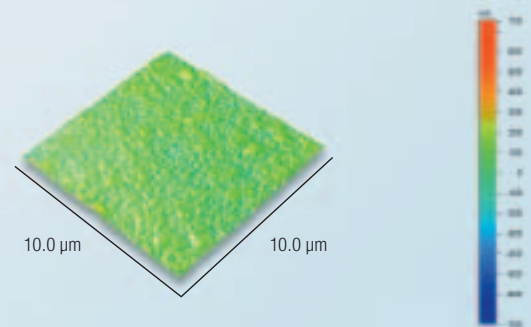
Protemp™ 4 Material is not just strong. It's both strong and flexible – very much like the wing of an airplane. Based on a unique combination of proprietary 3M ESPE nanofillers and polymers that work together, Protemp 4 material provides very high flexural strength plus a high deflection resulting in unmatched fracture work.



In a test measuring material toughness, Protemp™ 4 Temporization Material showed greater resistance to fracture than other tested temporization materials.
Source: Schwarz et. al., AADR 2014 accepted

Splendid esthetics and gingival health.

Protemp 4 offers patient-pleasing esthetics and a high wearing comfort through a smooth and glossy surface for easy plaque removal to support gingival health, high color stability and natural fluorescence.

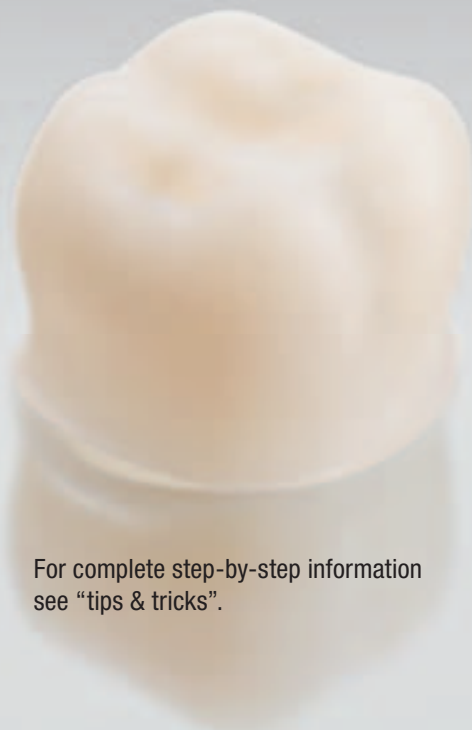


Surface topology of Protemp™ 4 Material after removing the inhibition layer with alcohol and no further polishing.

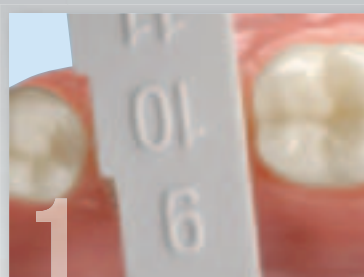
Source: 3M ESPE internal data – Atomic Force Microscopy (AFM) images by 3M Corporate Research Analytical Laboratory – (CRAL)

... to rebuild tooth structure

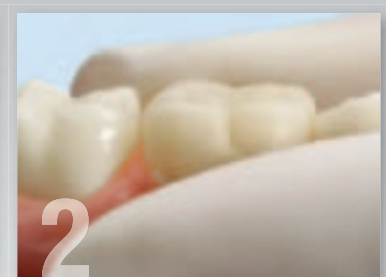
The unique preformed provisional crown



For complete step-by-step information see “tips & tricks”.



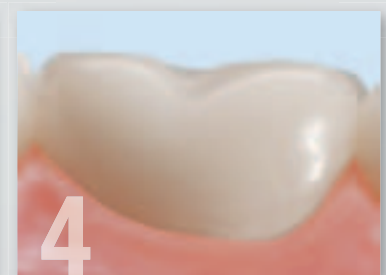
1 Measure and select crown.



2 Place and adapt crown chairside.



3 Light-cure.



4 Polish and cement.



One year clinical evaluation: very good to excellent ratings for all categories.

96% rated it excellent or good.
Gordon Christensen's Clinician's Report

FOR EACH INDICATION THE IDEAL TEMPORIZATION SOLUTION



Protemp™ 4 and Protemp™ Crown provisionals can be easily individualized and repaired using **Filtek™ Supreme XTE Flowable Restorative**.

For the cementation of the provisionals we recommend using **RelyX™ Temp NE/E Temporary Cement** from 3M ESPE.



Ordering Information



Protemp™ 4 Temporization Material Introductory Kit – A2 (46953)



Protemp™ Crown Temporization Material Introductory Kit (50600)

Item No.	Product Information
	Protemp™ 4 Temporization Material
46953	Introductory Kit – A2 1 cartridge – 50 ml, A2; 16 Garant™ Mixing Tips blue; 1 Garant™ Dispenser 10:1 Refills (each containing 1 cartridge – 50 ml, 16 Garant™ Mixing Tips blue)
46959	Bleach
46954	A1
46956	A2
46957	A3
46972	A3.5
46960	B3

Item No.	Product Information
	Protemp™ Crown Temporization Material
50600	Introductory Kit 42 Temporary Crowns (Sizes: 6 × Molar Upper Large, 6 × Molar Upper Small, 6 × Molar Lower Large, 6 × Molar Lower Small, 4 × Bicuspid (Premolar) Upper Large, 4 × Bicuspid (Premolar) Upper Small, 4 × Bicuspid (Premolar) Lower, 3 × Cuspid (Canine) Large, 3 × Cuspid (Canine) Small, 2 × 10 Crown Size Tools, Crown Drawer, Crown Drawer Labels)
50600TK	Trial Kit 16 Temporary Crowns (Sizes: 3 × Molar Upper Large, 3 × Molar Upper Small, 2 × Molar Lower Large, 2 × Molar Lower Small, 2 × Bicuspid (Premolar) Upper Large, 2 × Bicuspid (Premolar) Upper Small, 2 × Bicuspid (Premolar) Lower, 10 Crown Size Tools) Refills (each containing 5 Temporary Crowns; Instructions; Crown Size Tool)
50610	Molar Upper Large
50611	Molar Upper Small
50612	Molar Lower Large
50613	Molar Lower Small
50614	Bicuspid (Premolar) Upper Large
50615	Bicuspid (Premolar) Upper Small
50616	Bicuspid (Premolar) Lower
50617	Cuspid (Canine) Large
50618	Cuspid (Canine) Small

3M ESPE

3M Deutschland GmbH
Location Seefeld
3M ESPE · ESPE Platz
82229 Seefeld · Germany
info3mespe@mmm.com
www.3MESPE.com

3M, ESPE, Filtek, Garant, Imprint, Protemp and RelyX are trademarks of 3M Company or 3M Deutschland GmbH. Used under licence in Canada.

All other trademarks are owned by other companies.

© 2013, 3M. All rights reserved.

XX (0X.2013)

www.3MESPE.com